

A PLAT OF JUPITER NARROWS PHASE B GOMEZ GRANT, MARTIN COUNTY, FLORIDA

MARCH, 1985

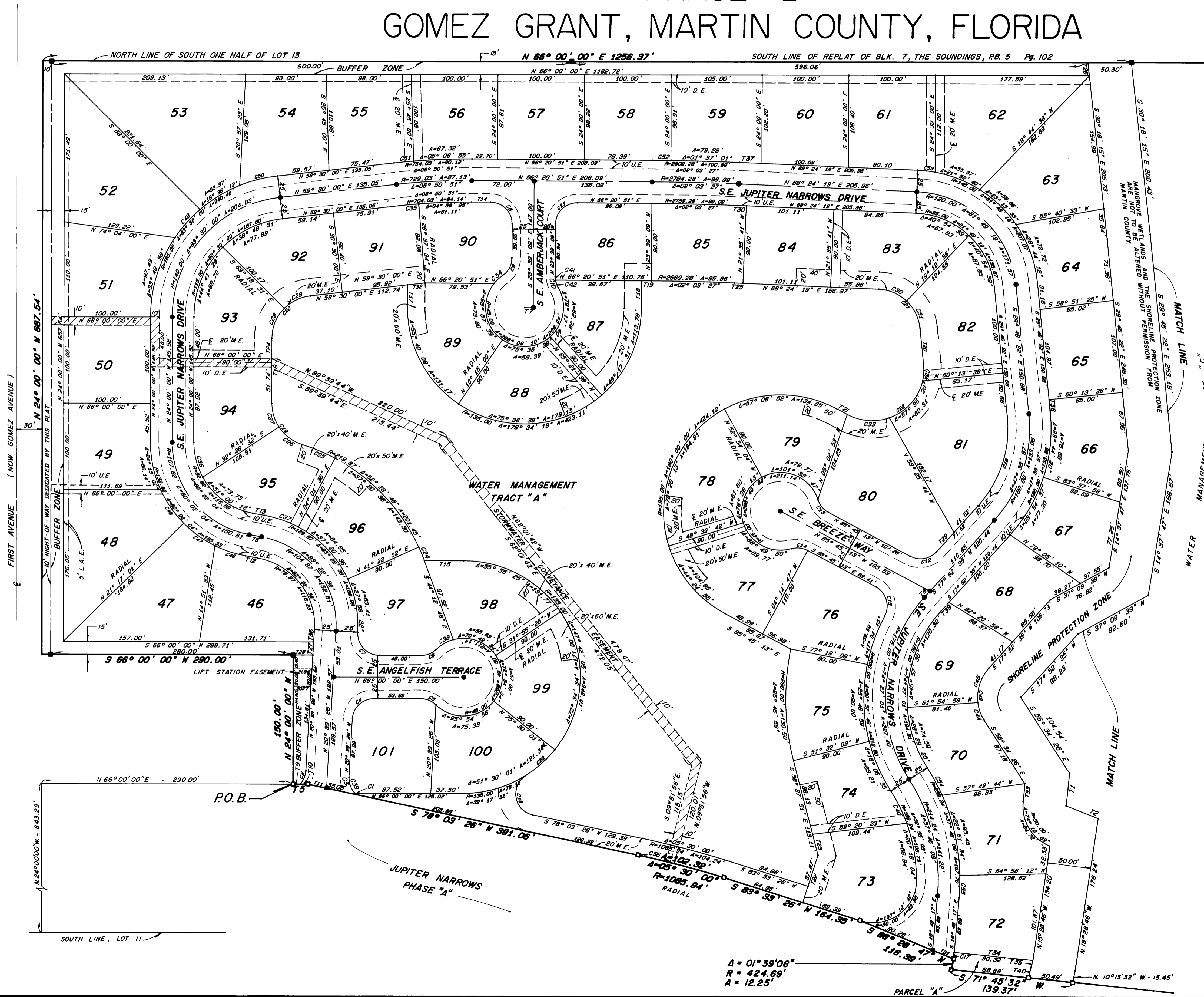
I, Louise V. Isaacs, Clerk of the Circuit Court of Martin County, Florida, hereby certify that this Plat was filed for record in Plat Book 9, Page 95, Martin County, Florida, Public Records, this day of _____, 1985.

Louise V. Isaacs, Clerk Circuit Court Martin County, Florida

By: _____ Deputy Clerk

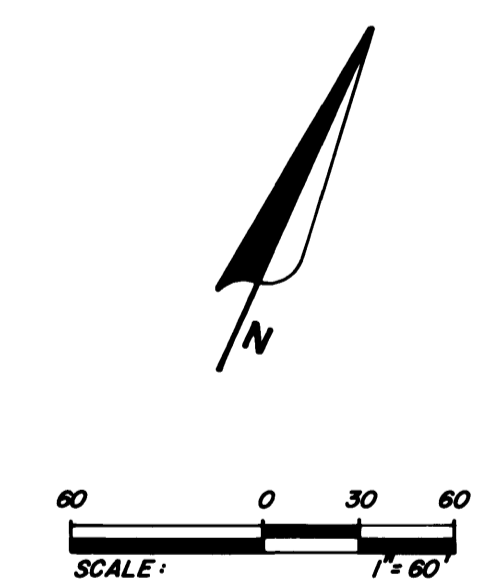
File No. _____

(Circuit Court Seal)



LABEL	RADIUS	CENTRAL ANGLE	ARC LENGTH
C1	25.00	05° 28' 53"	2.39
C2	25.00	39° 45' 20"	17.35
C3	25.00	52° 02' 55"	22.71
C4	25.00	86° 38' 26"	37.81
C5	25.00	44° 24' 55"	19.38
C6	25.00	44° 24' 55"	19.38
C7	25.00	93° 20' 34"	40.73
C8	25.00	90° 00' 00"	39.27
C9	25.00	55° 09' 00"	24.06
C10	25.00	31° 00' 10"	13.53
C11	25.00	30° 00' 00"	39.27
C12	25.00	76° 22' 12"	33.32
C13	25.00	44° 24' 55"	19.38
C14	25.00	44° 24' 55"	19.38
C15	25.00	30° 08' 36"	39.33
C16	135.00	47° 38' 57"	112.27
C17	424.89	01° 02' 48"	7.76
C18	25.00	135° 38' 40"	59.19
C19	50.00	72° 42' 37"	63.45
C20	50.00	83° 30' 00"	72.87
C21	50.00	81° 49' 19"	71.40
C22	60.00	124° 01' 10"	129.87
C23	135.00	19° 12' 06"	45.24
C24	219.87	04° 24' 59"	16.95
C25	219.87	10° 44' 12"	41.20
C26	50.00	39° 09' 09"	34.17
C27	50.00	33° 33' 28"	29.28
C28	50.00	44° 41' 29"	39.00
C29	50.00	38° 48' 31"	33.87
C30	50.00	40° 54' 39"	35.70
C31	50.00	40° 54' 39"	35.70
C32	60.00	18° 43' 03"	19.60
C33	60.00	47° 42' 47"	49.96
C34	45.00	17° 17' 13"	13.59
C35	704.03	01° 52' 28"	23.03
C36	82.82	29° 01' 52"	41.96
C37	129.87	18° 03' 40"	40.94
C38	45.00	29° 30' 27"	23.18
C39	25.00	46° 34' 05"	20.32
C40	189.24	12° 39' 05"	41.79
C41	25.00	09° 20' 08"	4.07
C42	25.00	21° 40' 01"	4.45
C43	50.00	74° 27' 01"	64.97
C44	50.00	25° 12' 37"	22.00
C45	50.00	49° 14' 24"	42.97
C46	132.82	15° 54' 22"	36.87
C47	132.82	19° 24' 43"	45.00
C48	132.82	20° 23' 57"	47.92
C49	165.00	15° 13' 15"	43.83
C50	165.00	15° 50' 36"	45.63
C51	754.03	01° 43' 56"	22.80
C52	2809.28	00° 26' 27"	21.61
C53	145.00	07° 56' 54"	20.12
C54	239.24	08° 39' 04"	36.12
C55	239.24	08° 15' 31"	26.13
C56	1065.94	02° 04' 39"	38.65

LABEL	BEARING	DISTANCE
T1	S 18° 15' 22" E	38.42
T2	N 87° 33' 30" E	39.78
T3	S 70° 53' 08" W	34.59
T4	S 10° 13' 32" E	37.94
T5	S 66° 00' 00" W	16.60
T6	S 75° 57' 56" W	13.99
T7	S 86° 20' 51" W	10.00
T8	S 17° 52' 35" W	9.53
T9	N 66° 00' 00" E	8.28
T10	N 66° 00' 00" E	6.31
T11	N 78° 03' 26" E	22.74
T12	S 75° 57' 56" W	13.99
T13	S 75° 57' 56" W	13.99
T14	N 66° 20' 51" E	45.24
T15	S 66° 00' 00" W	45.27
T16	N 24° 00' 00" E	75.01
T17	S 24° 04' 51" E	34.17
T18	N 23° 38' 09" W	32.00
T19	N 66° 20' 51" E	11.09
T20	S 29° 46' 22" E	41.75
T21	N 85° 45' 13" W	14.66
T22	N 08° 26' 34" W	57.87
T23	N 38° 27' 51" W	24.98
T24	N 24° 00' 00" W	23.27
T25	N 68° 24' 19" E	10.00
T26	N 30° 18' 15" W	15.09
T27	S 29° 39' 26" E	15.03
T28	N 66° 00' 00" E	23.84
T29	N 17° 52' 35" E	30.00
T30	S 68° 24' 19" W	10.00
T31	N 88° 28' 47" E	26.11
T32	S 59° 30' 00" W	20.28
T33	S 18° 16' 23" E	21.06
T34	S 71° 45' 32" W	91.42
T35	N 10° 13' 32" W	7.93
T36	N 20° 39' 26" W	13.99
T37	N 68° 24' 19" E	25.78
T38	S 29° 46' 22" E	14.55
T39	S 17° 52' 35" W	14.44
T40	S 10° 13' 32" W	12.36



- LEGEND**
- - FOUND P.R.M. (PERMANENT REFERENCE MONUMENT)
 - - P.R.M. (PERMANENT REFERENCE MONUMENT)
 - - P.C.P. (PERMANENT CONTROL POINT)
 - U.E. - UTILITY EASEMENT
 - M.E. - MAINTENANCE EASEMENT
 - D.E. - DRAINAGE EASEMENT
 - L.A.E. - LIMITED ACCESS EASEMENT

BEARING BASE
THE EASTERLY RIGHT-OF-WAY LINE OF FIRST AVENUE IS TAKEN TO BE N. 24° 00' 00" W. AND ALL OTHER BEARINGS ARE RELATIVE THERETO.

LINDAHL, BROWNING, FERRARI & HELLSTROM, INC. Consulting Engineers, Planners & Surveyors	
JUPITER, FLORIDA	STUART, FLORIDA
FORT PIERCE, FLORIDA	2 3